



Enterprise-ready Private AI. Zero Complexity. Full Control.

Despite AI's transformative potential, many organizations face significant challenges in deploying it securely and effectively. Data privacy and compliance remain major concerns, as public AI solutions can expose sensitive information to security risks. Dependence on third-party AI SaaS providers introduces vulnerabilities around business continuity due to potential service disruptions beyond the organization's control. At the same time, DIY AI approaches are often complex, time-consuming, and require specialized expertise along with fragmented tools. The cost of building and maintaining such systems—especially those involving multi-agent architectures—can be substantial, further hindering adoption.

QXLI overcomes these challenges and streamlines enterprise AI adoption with a secure, ready-to-use, and cost-effective solution. It enables organizations to deploy private AI, protect sensitive data, and accelerate time-to-value—all without the need for a large internal AI team.

What is QXLI?

Short for **Quick eXtensible Layered Intelligence**, QXLI is a pre-configured, enterprise-ready AI engine that integrates leading AI frameworks, optimized LLMs, and advanced agent tools into a single out-of-the-box solution. Deployable entirely within your infrastructure — on-premises or in the cloud—QXLI enables secure AI adoption in data-critical environments where cloud-based tools can't go.

Advanced AI Tools

Employ RAG & customized AI agents, integrate with enterprise apps

Fast and Cost Efficient

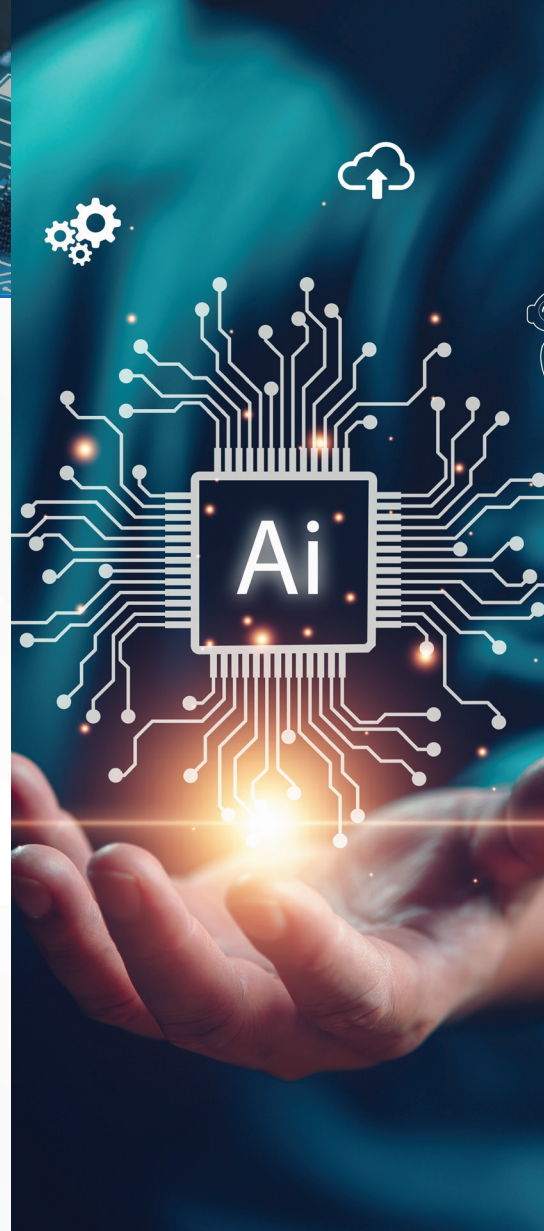
Enable AI adoption without the need for specialized tools and in-house skills

Optimized Multi-LLM

Utilize multiple optimized and fine-tuned AI models simultaneously

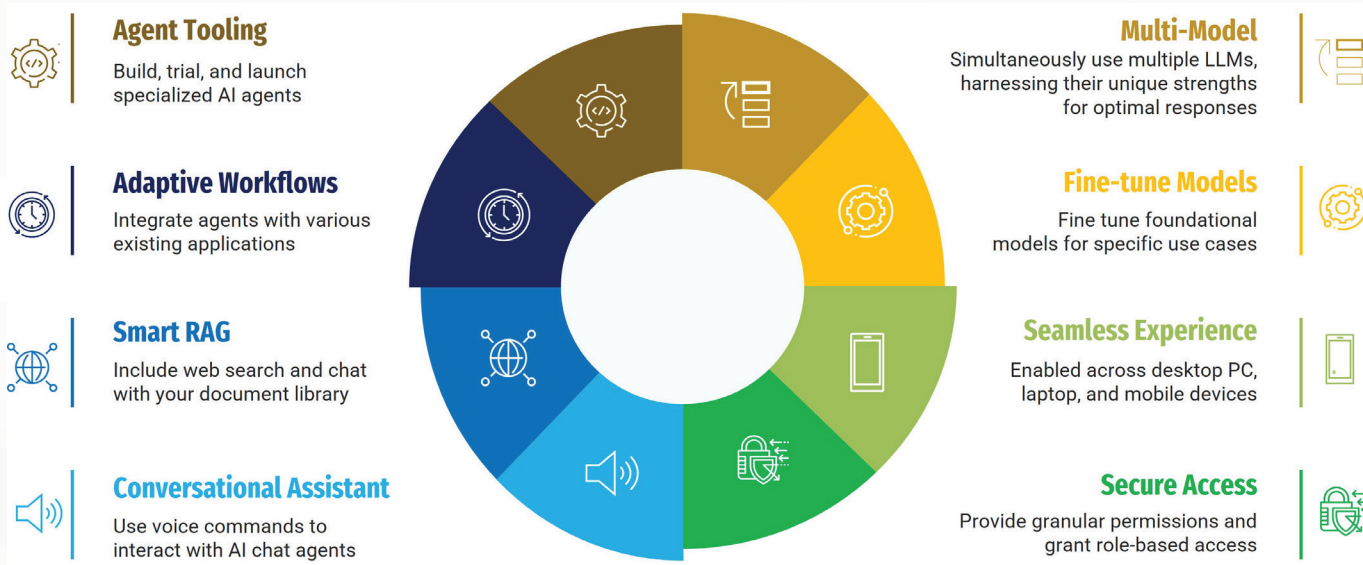
Private and Secure

Keep all data and processing within organizational boundaries



QXLI supports multi-model operations, allowing organizations to run and orchestrate multiple AI models for optimal performance. Foundational LLMs can be fine-tuned for specific industry applications, and sets of specialized AI agents can be developed, configured, and deployed to automate complex workflows. Robust security and access controls enforce granular, role-based permissions, ensuring only authorized users can interact with the AI system. A built-in conversational AI assistant further enhances usability, enabling intuitive voice and text interactions that boost engagement and productivity.

Key Features



Why QXLI

Originally assembled to meet our own enterprise needs, QXLI empowers organizations to unlock the power of AI—quickly, securely, and cost-effectively. As a pre-configured, out-of-the-box solution, it removes deployment complexity and accelerates time-to-value, without requiring a large internal AI team. Designed with privacy and security at its core, QXLI ensures sensitive data remains within enterprise boundaries throughout the entire AI lifecycle. It enables organizations to adopt and scale AI confidently—achieving rapid results while maintaining full control over their operations.

Get The QXLI Advantage!

By combining cutting-edge AI capabilities with privacy and security, QXLI empowers organizations to innovate with confidence —delivering Zero Complexity. Full Control. Unlock the QXLI advantage. Get in touch, today!

Get in Touch



www.qxli.com



info@qxli.com



Inception
Program